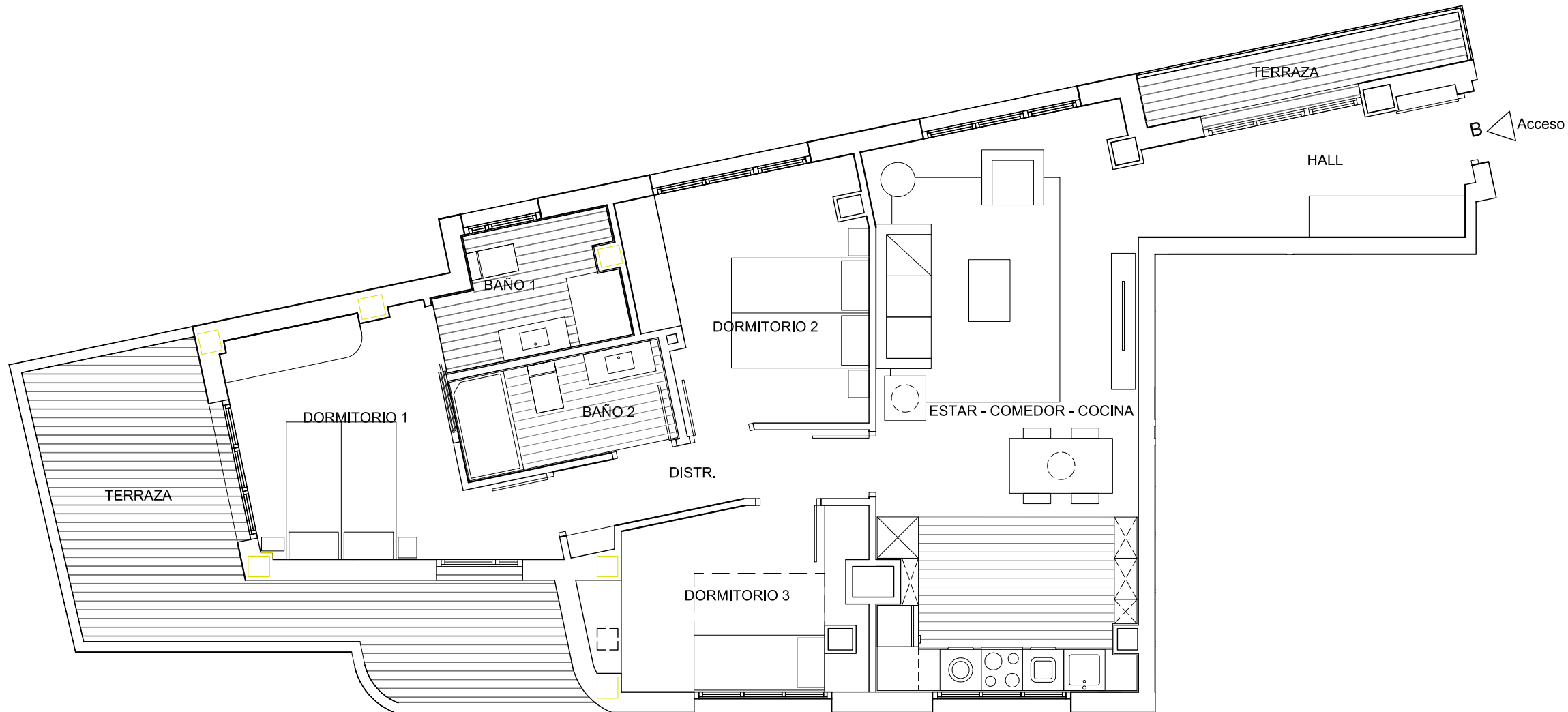
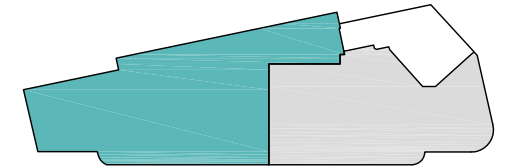
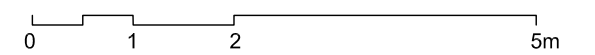




E: 1/75



SUP. ÚTILES PLANTA 3ª	
	B
Hall - distribuidor	8,35 m ²
Estar - comedor - cocina	4,64 m ²
Dormitorio 1	30,83 m ²
Dormitorio 2	12,20 m ²
Dormitorio 3	11,47 m ²
Baño 1	9,81 m ²
Baño 2	4,55 m ²
Lavadero-tendedero	4,51 m ²
Sup. Util Interior	86,36 m²
Terraza S/2	8,42 m ²
Tendedero S/2	0,00 m ²
Total Sup. Util vivienda	94,78 m²

3º B

