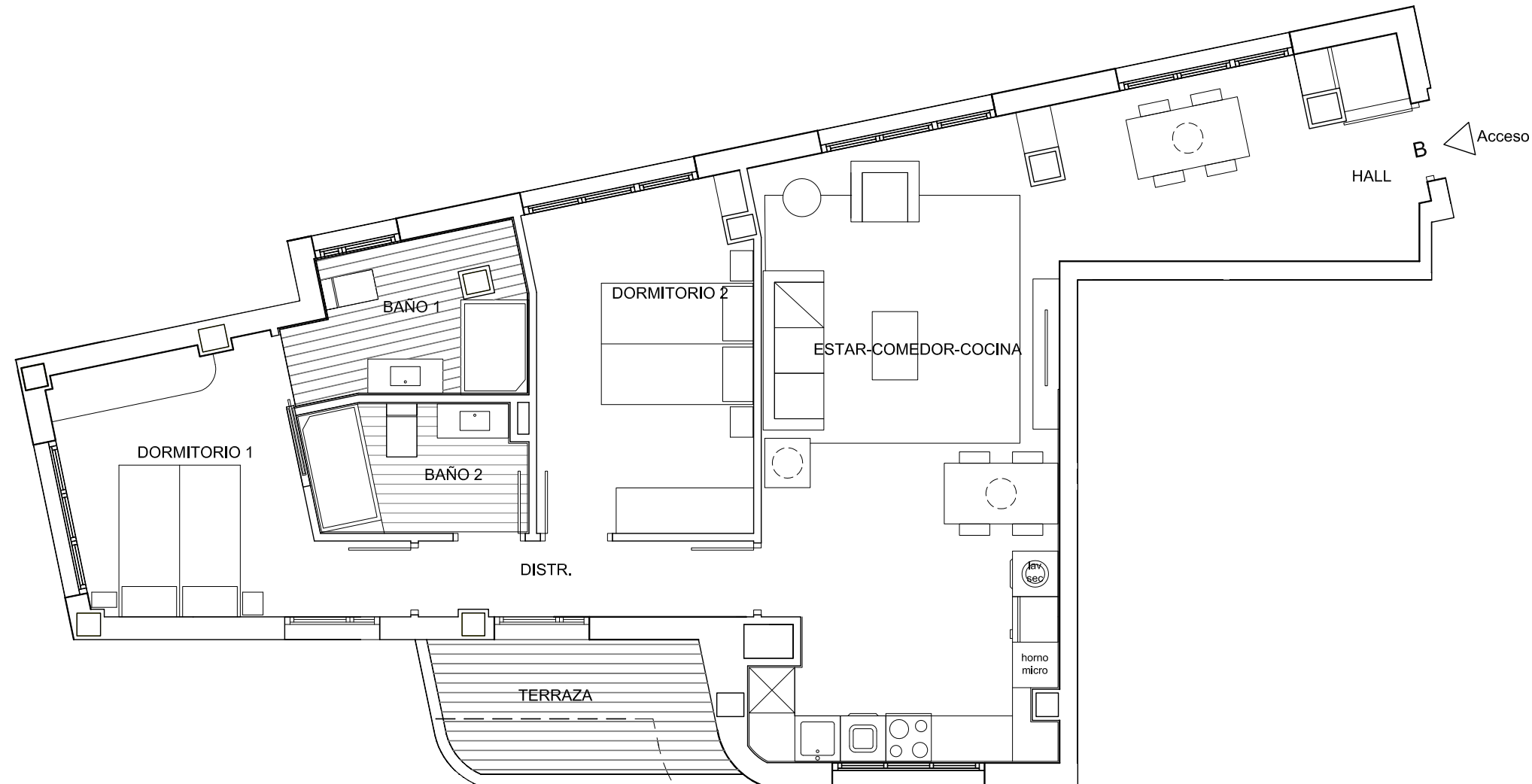
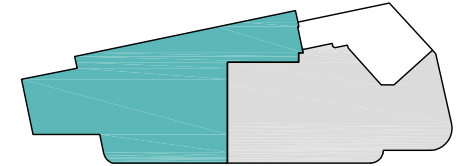
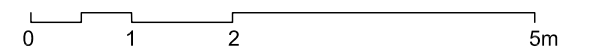


E: 1/75



SUP. ÚTILES PLANTA 4ª	
	B
Hall - distribuidor	3,38 m ²
Estar - comedor - cocina	4,42 m ²
Dormitorio 1	11,96 m ²
Dormitorio 2	12,85 m ²
Dormitorio 3	m ²
Baño 1	5,97 m ²
Baño 2	4,67 m ²
Lavadero-tendedero	m ²
Sup. Util Interior	83,65 m²
Terraza S/2	3,17 m ²
Tendedero S/2	0,00 m ²
Total Sup. Util vivienda	86,82 m²

4°B

