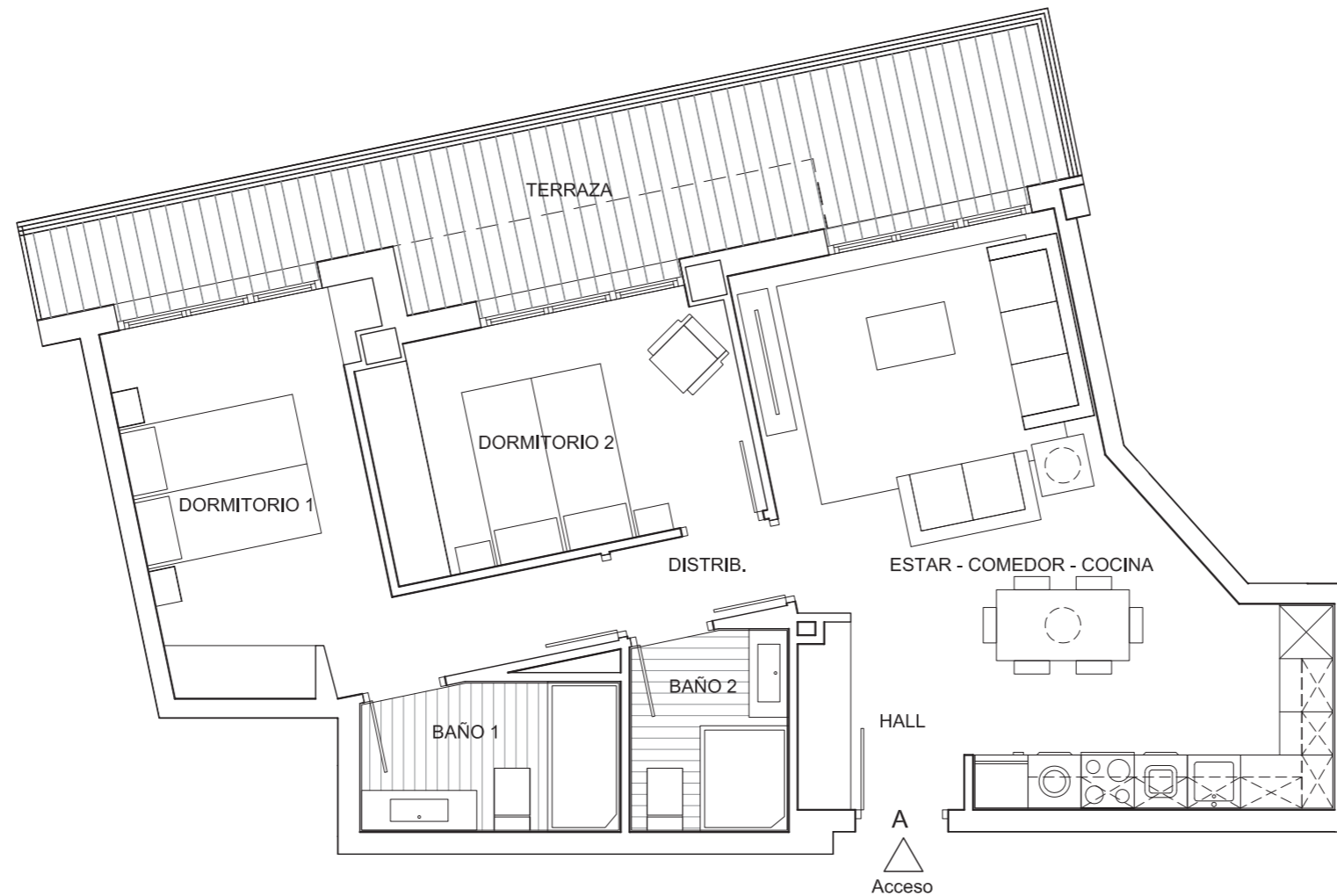
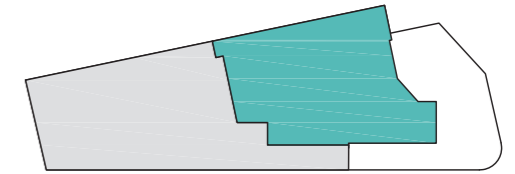
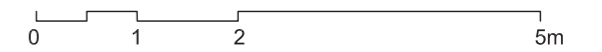




E: 1/75



SUP. ÚTILES PLANTA BAJA	A
Hall - distribuidor	3,92 m ²
	1,84 m ²
Estar - comedor - cocina	26,52 m ²
Dormitorio 1	14,36 m ²
Dormitorio 2	11,13 m ²
Dormitorio 3	
Baño 1	4,85 m ²
Baño 2	3,86 m ²
Sup. Util Interior	66,48 m²
Terraza S/2	8,55 m ²
Tendedero S/2	0,00 m ²
Total Sup. Util vivienda	75,03 m²

BAJO A

